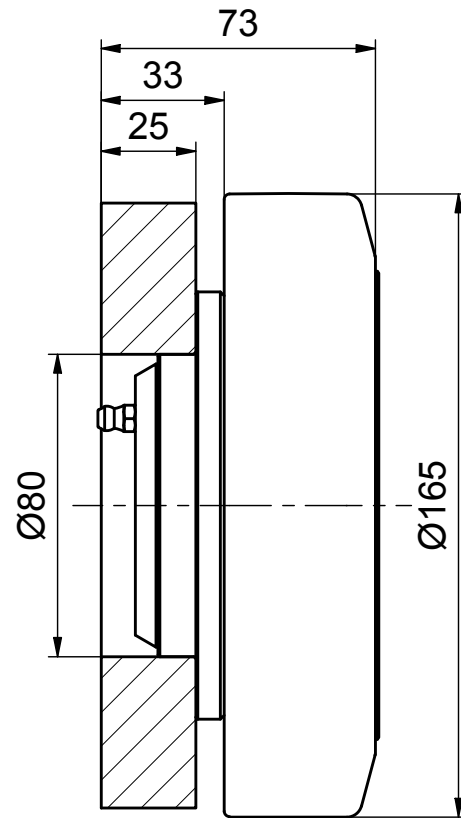
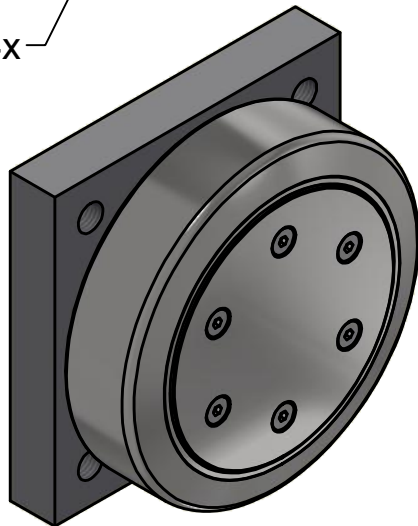



M16-4x



 <p>ALFATEC[®] ... gehobene Technik</p> <p>Alfatec-Str. 1 D-70794 Filderstadt Tel.: +49 711 907 400-0 Mail: mail@alfatec.biz www.alfatec.biz</p> <p><small>Allgemeintoleranz nach DIN ISO 2768-1m, DIN ISO 2768-2f oder DIN ISO 13920-8. Werkstückkanten nach DIN ISO 13715. Schutzvermerke nach DIN 34 beachten.</small></p> <p><small>General tolerance after DIN ISO 2768-1m, DIN ISO 2768-2f or DIN ISO 13920-8. Partedged according to DIN ISO 13715 Protection note according to DIN 34 consider.</small></p>		Typschlüssel/type code: MR 165.0410 Ø 165 mm Radialrolle - fest	
		Beschreibung/description: Mammutrolle m. BQ1000	
Referenz-Nr./reference number: 1000005416		Maßstab/scale: 1:2	Blatt/page: 1 von 1
		Gewicht/weight: 11.4 kg	A4