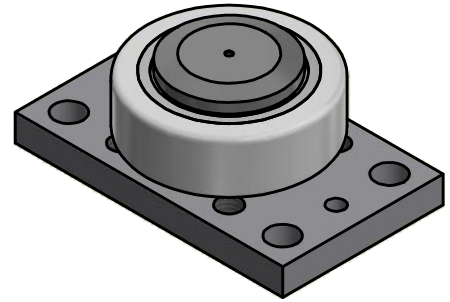
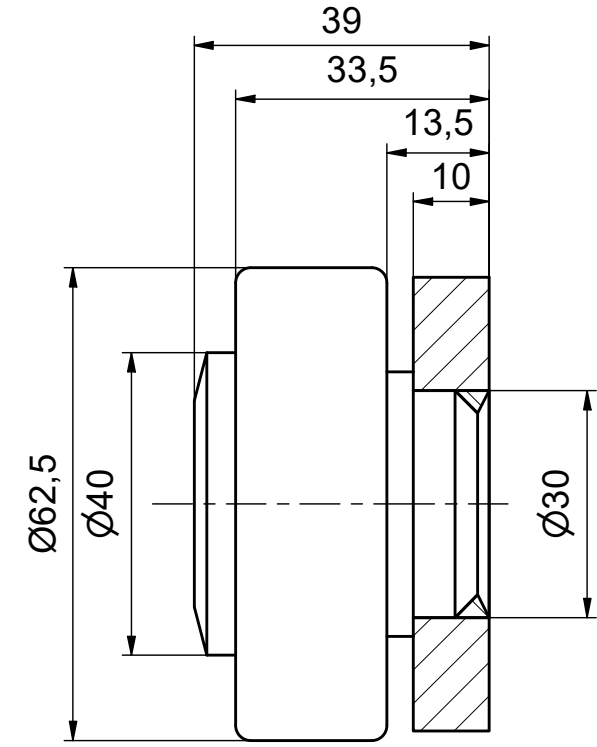
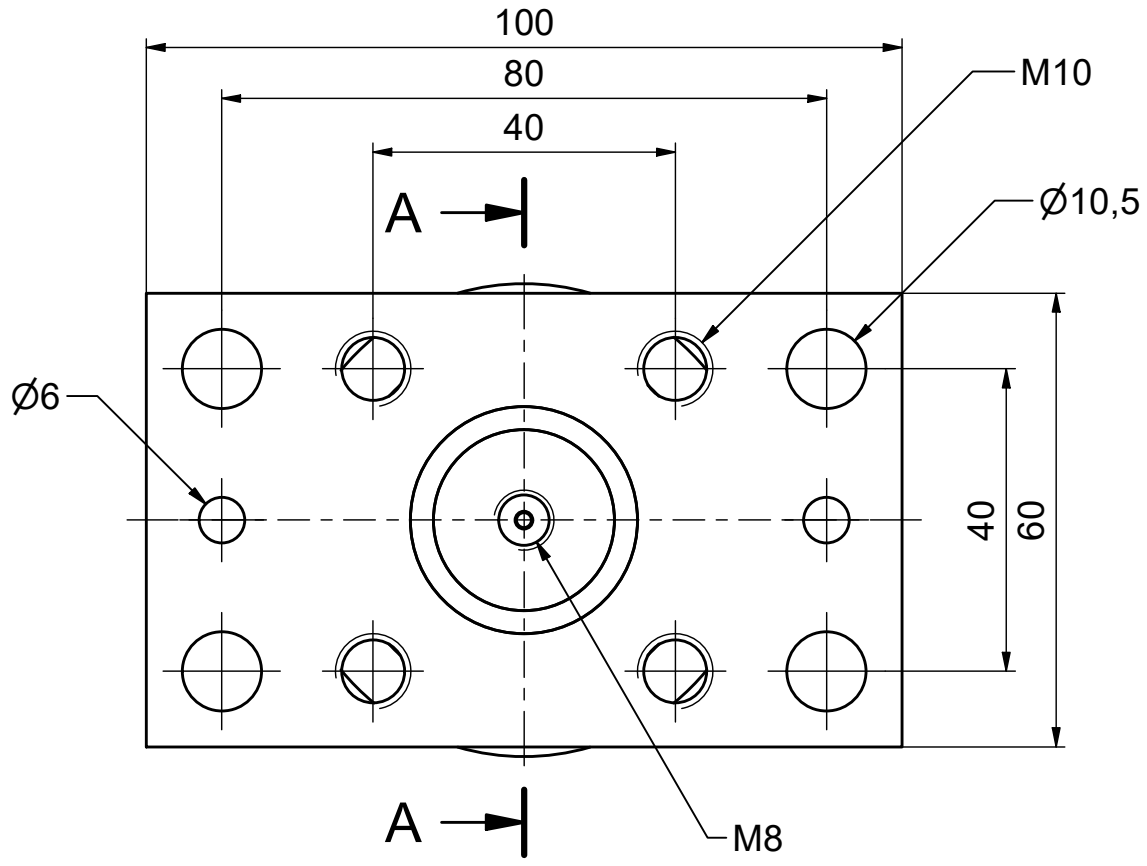





A-A (1 : 1)



 FÖRDERSYSTEME Alfatec-Str. 1 D-70794 Filderstadt Tel.: +49 711 907 400-0 Mail: mail@alfatec.biz www.alfatec.biz	Typschlüssel/type code: PAS 060.0360 BR1100 Ø 62,5 mm mit Oilamidgleitstück - fest		
	Beschreibung/description: PA-ALFA-Speed-Rolle mit BR1100		
<small> Allgem. Toleranz nach DIN ISO 2768-1m, DIN ISO 2768-2k oder DIN ISO 13920-5. Werkstückarten nach DIN ISO 13715. Schutzvermerke nach DIN 34 beachten. General tolerance after DIN ISO 2768-1m, DIN ISO 2768-2k or DIN ISO 13920-5. Part/edge according to DIN ISO 13715 Protection note according to DIN 34 consider. </small>	Referenz-Nr./reference number: 1000005713	Maßstab/scale: 1 : 1	Blatt/page: 1 von 1
	Gewicht/weight: 0,7 kg		A4

