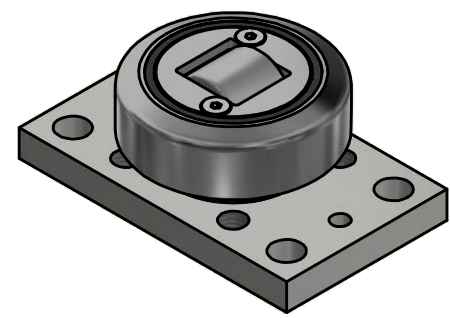
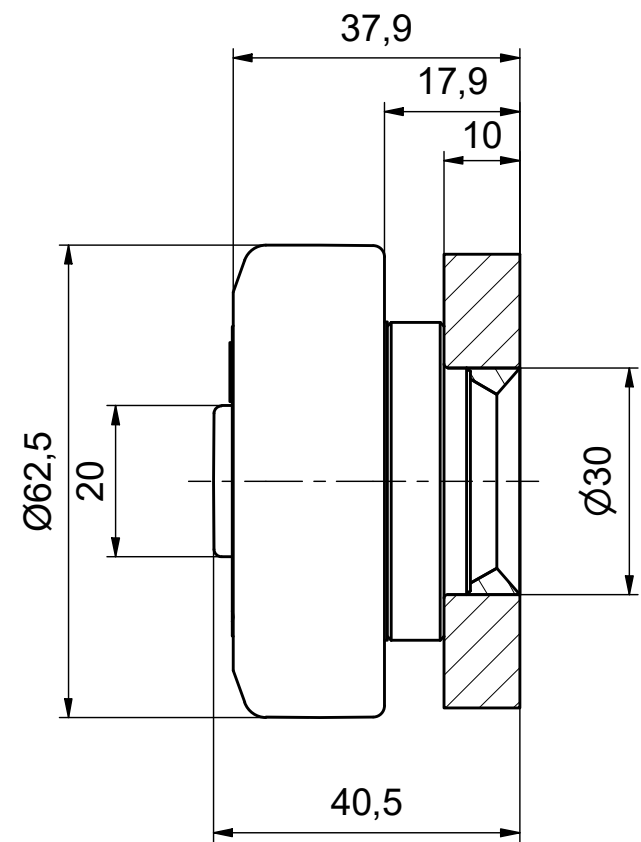
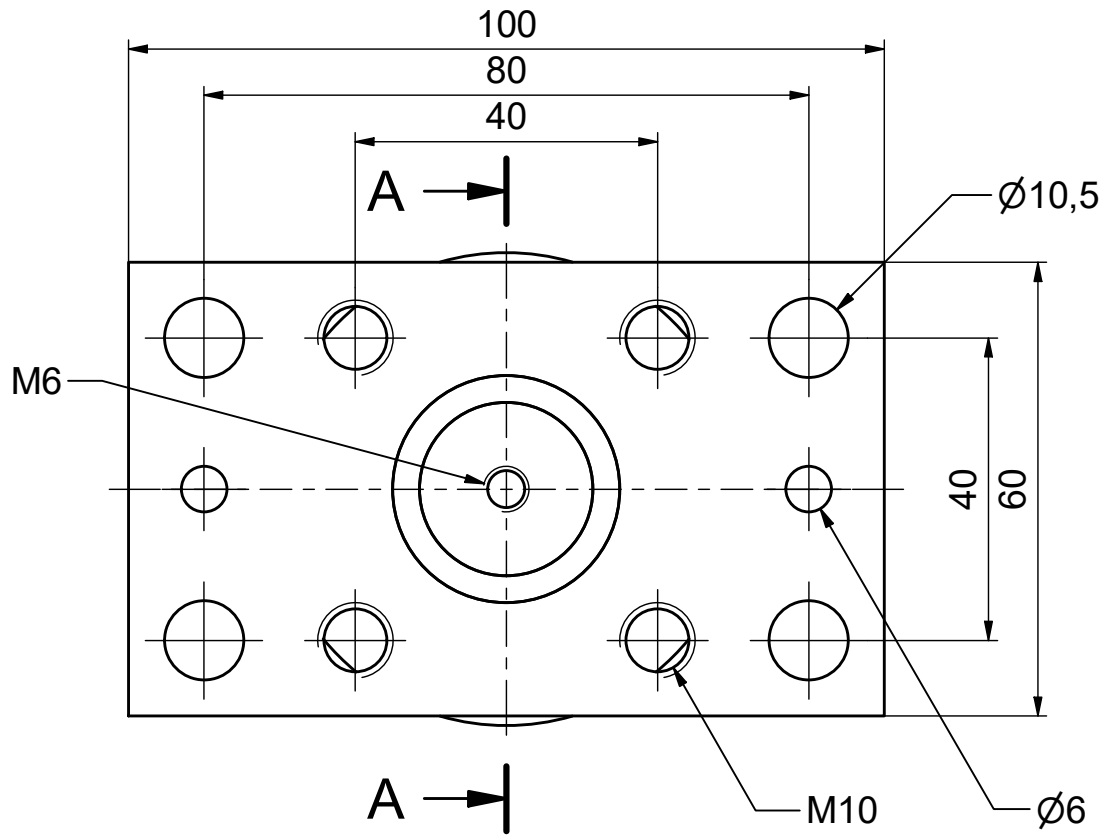





A-A (1 : 1)



 ALFATEC® FÖRDERSYSTEME Alfatec-Str. 1 D-70794 Filderstadt Tel.: +49 711 907 400-0 Mail: mail@alfatec.biz www.alfatec.biz	Typschlüssel/type code: TR 060.0200 BR1100 Ø 62,5 mm mit Axialrolle - fest	
	Beschreibung/description: Tigerrolle mit BR1100	
<small> Allgemeintoleranz nach DIN ISO 2768-1m, DIN ISO 2768-2f oder DIN ISO 13920-5. Werkstückkanten nach DIN ISO 13715. Schutzvermerke nach DIN 34 beachten. General tolerance after DIN ISO 2768-1m, DIN ISO 2768-2f or DIN ISO 13920-5. Partface according to DIN ISO 13715 Protection note according to DIN 34 consider. </small>	Referenz-Nr./reference number: 1000008247	Maßstab/scale: 1 : 1
	Blatt/page: 1 von 1	Gewicht/weight: 0,9 kg

